

ATTACHMENT B

Restoration Striping – Location
Details

Dartmouth & Talbot

- Restore STOP bar & STOP "wording"



Key Route & Thousand Oaks

- Restore STOP "wording" (**note:** crosswalk has been fixed)



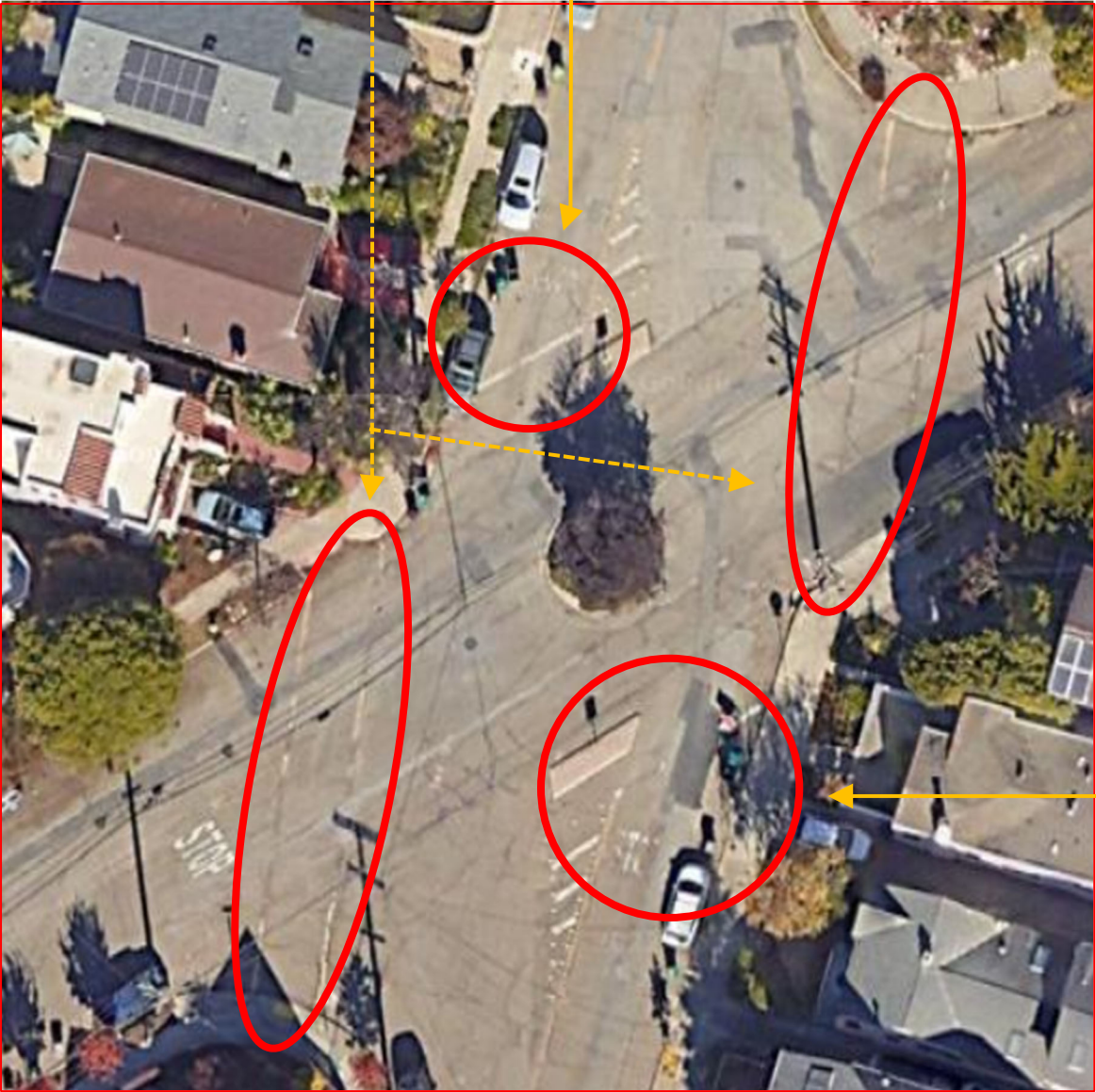
Key Route & Santa Fe

- Restore STOP bar & STOP "wording"
- Restore double solid yellow traffic lines (Key Route centerline & "triangle")



Posen & Ordway

- Restore STOP “wording”
- Restore crosswalks



Francis & Peralta

- Restore crosswalk

