

EUCALYPTUS REMOVALS PROJECT OVERVIEW

This project has **three distinct phases** of removals work, each separated by a restoration phase of work completed by another contractor. Prior to each removals phase, City of Albany staff and the restoration contractor will designate valuable native understory as **Priority Native Plant Stands (PNPSs)**. These PNPS's will be protected in place during each relevant removals phase. The final phase of removals (Phase 6) occurs in the Monarch Management Area in which trees will be evaluated and flagged for removal by the City of Albany. The City will provide the removals contractor with removal quantities.

Phase 1 Restoration - Pilot Phase

Phase 2 Removals - Exterior

- Areas A, B, C1-2, D1-4

Phase 3 Restoration - Exterior

Phase 4 Removals - Interior

- Areas E, F1-2, G

Phase 5 Restoration - Interior

Phase 6 Removals - Monarch Management Area

- Critical Monarch Zone and Monarch Buffer Zone (Areas H, J1-2)

Phase 7 Restoration - Monarch Management Area

For each area description on the following pages, total trunk counts from Lidar survey and best correlation of arborist tag numbers are included for Contractor reference.

Total tree count for each eucalyptus removal area to be verified in field by contractor.



- Phase 2 Removals - Exterior (5.3 ac total)
- Phase 4 Removals - Interior (2.8 ac total)
- Phase 6 Removals - Monarch Management Area (2.4 ac total)
- Critical Monarch Zone - N.I.C.

REMOVALS PHASE NOTES

GENERAL NOTES

- These notes highlight key requirements of the specifications and provide additional project information. The contractor shall comply with all terms, requirements, and restrictions contained in the plans, specifications, and other contract documents.
- Contractor must familiarize and comply with all project permit conditions.
- Protect all existing features not noted for demolition.
- Preserve and protect in place all utilities unless otherwise noted.
- Legally dispose of all material cleared, grubbed, demolished, or salvaged but not utilized for project or accepted by owner. Stockpile all materials noted on plans for reuse.
- Contractor shall be responsible for construction site security during the construction period.
- The contractor is responsible for coordinating all of the work performed by his/her subcontractors, without exception.
- The contractor shall identify a responsible contact person, who is an employee of the contractor, and a 24-hour telephone number to call to resolve problems with noise, dust or other construction-related issues.
- All trash must be removed from the site daily to protect wildlife. Remove all litter and construction related debris before leaving the site each day.
- Any deviation from these approved plans shall be re-approved in writing by the O.R. prior to construction.
- Any property line stakes or road monuments disturbed during construction shall be replaced by contractor's engineer and licensed land surveyor.
- Contractor shall notify USA (underground service alert) at 1-800-277-2600 a minimum of 24 hours before beginning underground work for verification of the location of underground utilities.
- Accurate verification as to size, location, and depth of existing underground conduits or facilities shall be the individual contractors responsibility. Plan locations are approximate and for general information only.

EROSION CONTROL NOTES

- Erosion and sedimentation control measures shall be installed prior to commencing work and shall not be removed until the work is verified in accordance with the plans and specifications and final approval is received.
- Contractor shall prepare Storm Water Pollution Protection Plan (SWPPP) or Water Pollution Control Plan (WPCP) in accordance with regional requirements prior to construction activities.

ENVIRONMENTAL PROTECTION NOTES

- See sheet T-3 in the the Albany Hill Habitat Restoration Plan for permit conditions, MMRPs and BMPs as required.

LOG AND BRANCH DISPOSAL

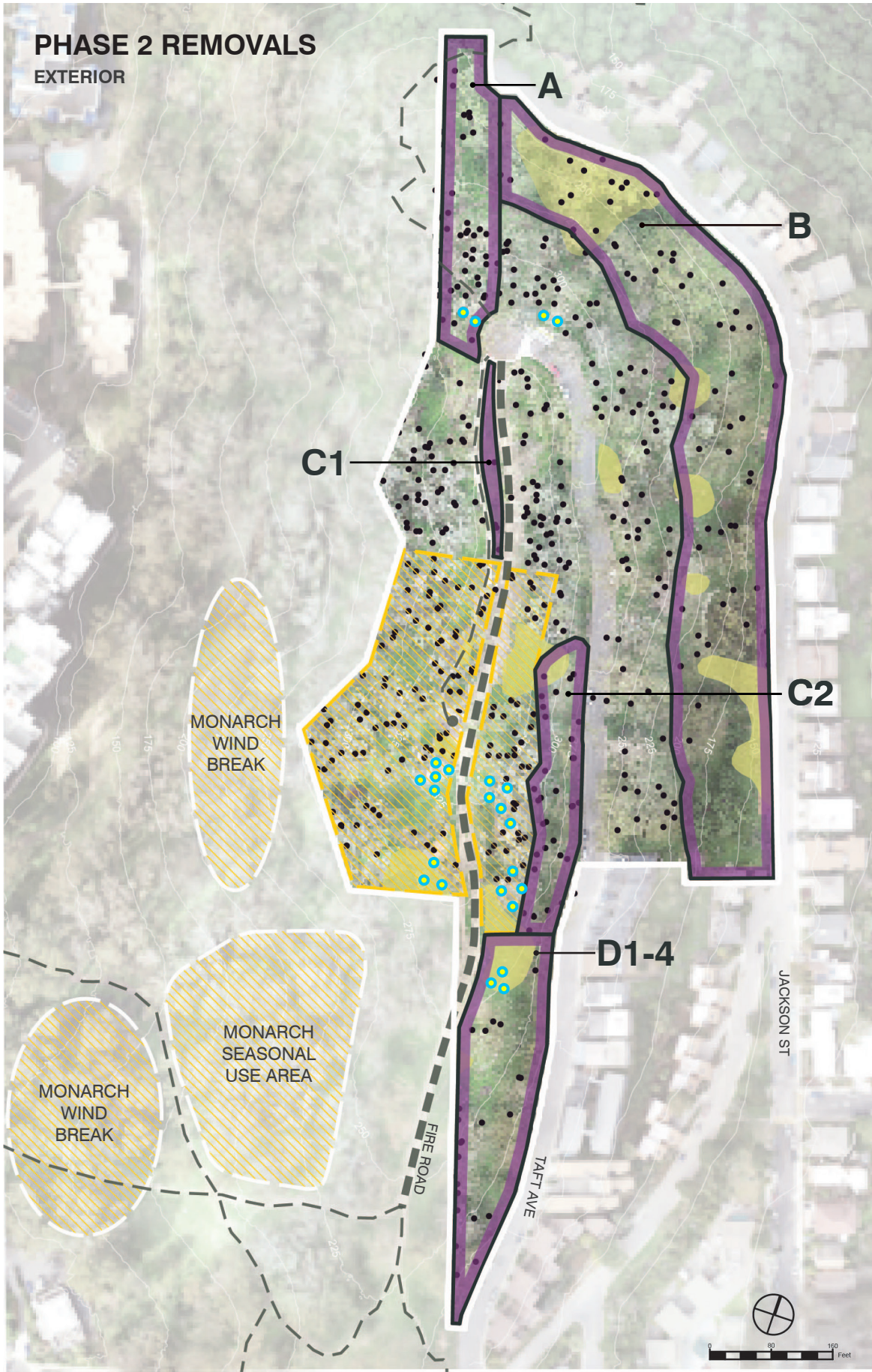
- Contractor shall cut removed trees to create logs per Albany Hill Habitat Restoration Plan, Sheet L-8.0, detail 5.
- Contractor shall place and secure logs per the Albany Hill Habitat Restoration Plan, Sheets L-2.0, L-4.0, L6.0 and Sheet Sheet L-8.0, detail 5. Contractor shall walk the site with City of Albany Natural Areas staff to confirm log locations.
- Contractor shall stockpile branches for fascines, per Sheet L-8.0, detail 6. Contactor shall confirm branch stockpile location with City of Albany Natural Areas staff.
- Contractor shall mulch the remaining tree material and stockpile.

SUBMITTALS LIST


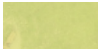


- Contractor to confirm required submittals per the project technical specifications, which including the following:
- List of workers for on-site biological training
- Storm Water Pollution Prevention Plan (SWPPP) or Water Pollution Control Plan (WPCP)
- Site Access and Staging Plan
- Project Schedule
- Product Data
- Removals permits, haul routes and debris disposal plan
- Traffic Control
- Noise Control

PHASE 2 REMOVALS

EXTERIOR



LEGEND

-  Monarch Management Area
-  Priority Native Plant Stand (PNPS)
-  Field Trial Tree Locations
-  Existing Eucalyptus Trees (location approx.)

AREAS

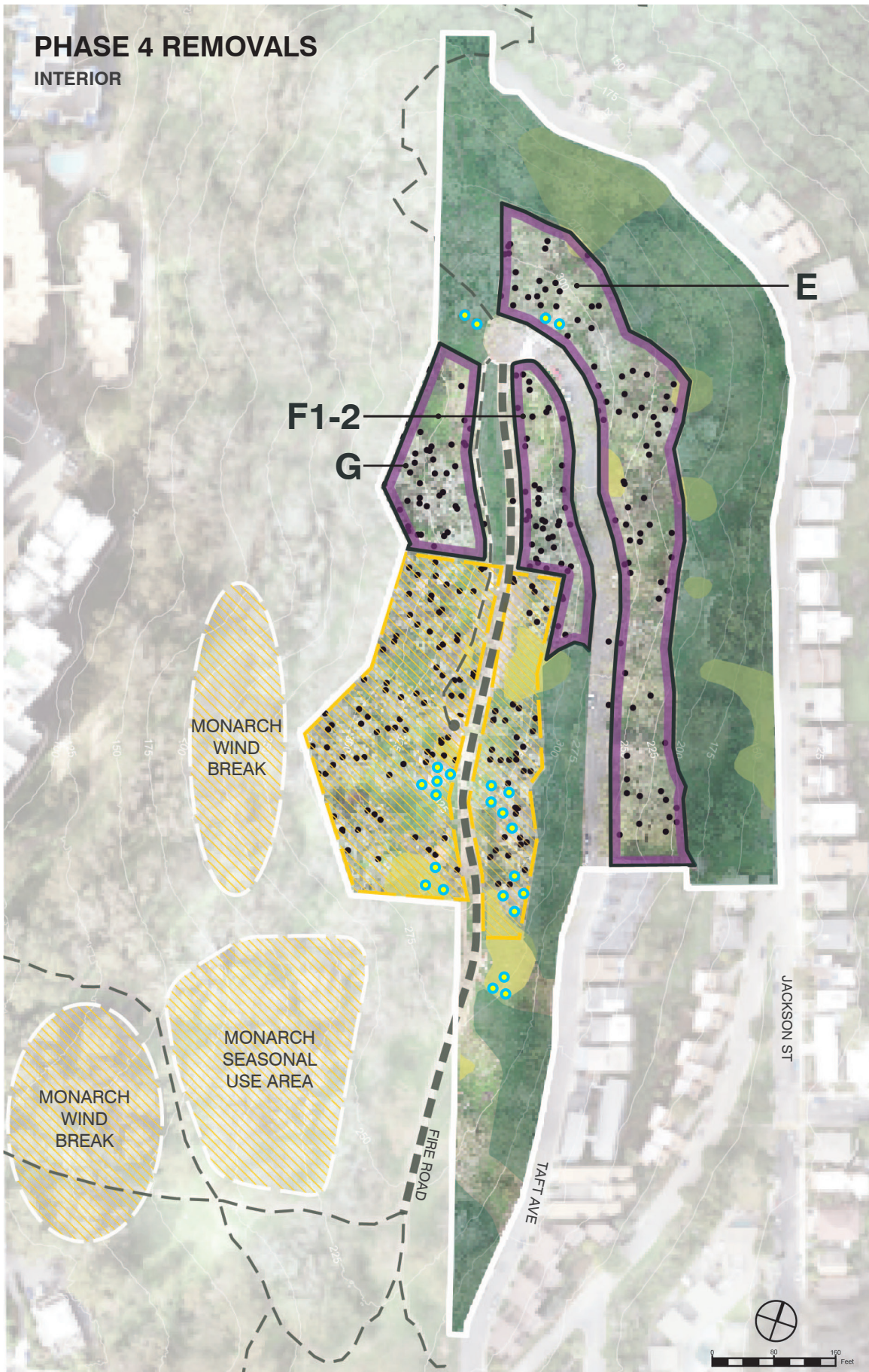
- AREA A:** ±41 EUCS
• Arborist #: 1-13, 261-328
- AREA B:** ±72 EUCS
• Arborist #: 329-356, 357-388
- AREA C1:** ±6 EUCS
• Arborist #: 9,12, 81, 85, 128, 129
- AREA C2:** ±26 EUCS
• Arborist #: 64, 102-124
- AREA D1-4:** ±12 EUCS
• Arborist #: 48-67, 125-127, 176-197

ACTIONS

- Contractor to confirm indicated drag routes as a result of Restoration Phase 1.
- Trees may be cut at field grade or left with up to 4' of trunk as needed to protect adjacent vegetation.
- All eucalyptus stumps to be treated per specifications.
- See legend sheet L-3.2 to 3.4 for mulch distribution guidelines.
- Lengths of trunk and branches to be used on site for bioengineering installations. See sheet L-2.0 for log installation locations overview for this phase, and sheets L-3.2 to 3.4 for more details.
- See specifications for other requirements.

PHASE 4 REMOVALS

INTERIOR



LEGEND

-  Monarch Management Area
-  Priority Native Plant Stand (PNPS)
-  Phase 1 & 3 Restoration
-  Field Trial Tree Locations
-  Existing Eucalyptus Trees (location approx.)

AREAS

AREA E: ± 81 EUCS

- Arborist #: 14-47

AREA F:1-2 ± 45 EUCS

- Arborist #: 68-101, 128-139

AREA G: ± 33 EUCS

- Arborist #: 198-220

ACTIONS



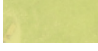



- Contractor to confirm designated drag routes indicated as a result of Restoration Phases 1 and 3.
- Trees may be cut at field grade or left with up to 4' of trunk as needed to protect adjacent vegetation.
- All eucalyptus stumps to be treated per specifications.
- See sheet L-5.2 to 5.4 for mulch distribution guidelines.
- Lengths of trunk and branches to be used on site for bioengineering installations. See sheet L-4.0 for log installation locations overview for this phase, and sheets L-5.2 to 5.4 for more details.
- See specifications for other requirements.

PHASE 6 REMOVALS

MONARCH MANAGEMENT AREA



LEGEND

-  Monarch Buffer Zone
-  Critical Monarch Zone
-  Priority Native Plant Stand (PNPS)
-  Phase 1, 3 & 5 Restoration
-  Field Trial Tree Locations
-  Existing Eucalyptus Trees (location approx.)

AREAS

MONARCH BUFFER ZONE: ± 53 EUCS

- Tree removal to be assessed
- Arborist #: 221-230, 140-153

CRITICAL MONARCH ZONE: ± 66 EUCS

- NO TREE REMOVAL - NOT IN CONTRACT
- Arborist #: 154-176, 231-250, 389, 390

ACTIONS

- Trees in the Monarch Buffer Area will be assessed for health and potential removal in this phase.
- Trees in the Critical Monarch Zone are N.I.C. The City of Albany will regularly evaluate the trees in this area.
- Monarch protection BMPs are to be strictly followed in the Critical Monarch Zone.